

**WARNING:** Improper use of this Diablo .68 CALIBER PAINTBALL MARKING DEVICE by or with a person not wearing suitable eye protection may lead to serious personal injury. THEREFORE, CAREFULLY READ ALL INSTRUCTIONS INCLUDED WITH THIS PAINTBALL MARKING DEVICE BEFORE USING AND ASSURE THAT ALL INSTRUCTIONS AND SAFETY PRECAUTIONS ARE ALWAYS FOLLOWED BY ANY PERSONS USING THE DIABLO.

## SAFETY PRECAUTIONS

### FOLLOW THESE GUIDELINES TO HELP PREVENT ACCIDENTS AND INJURIES

- Always wear proper eye protection when using the Diablo or any paintball marking device. Never remove eye protection while on the playing field under any circumstances. Make sure you are in a safety zone first.
- Never shoot at other people unless on an organized & sanctioned paintball playing field with all others wearing proper eye protection. Stop play immediately if discovered that a person is on the field without proper eye protection.
- Never point the Diablo in the direction of anything you don't intend to shoot.
- Never shoot at heads, unprotected or sensitive body parts, or at animals.
- Never look down the barrel for any reason.
- Whenever leaving target area or playing field, always first remove CO<sub>2</sub> supply, then remove all paintballs.
- Keep exposed flesh away from escaping CO<sub>2</sub> - it can cause frostbite!

*SAFETY PRECAUTIONS continued on the following page.*

## \*\*\* IMPORTANT \*\*\*

- 1) Always perform a "SAFE VELOCITY TEST" before using your DIABLO. This can be accomplished using a device called a CHRONOGRAPH, & can be performed by the dealership where you purchased your DIABLO, or at your local playing field. Your Diablo is intended to be used at a velocity of no greater than 300 feet per second (FPS). Recommended velocity is 280 FPS or less.
  - 2) Use only high quality .68 caliber paintballs (PROBALL paintballs are recommended). Do not attempt to fire any foreign objects.
  - 3) If transporting your DIABLO, do so only after it have been emptied of paintballs & the CO<sub>2</sub> source has been disconnected.
  - 4) Store your DIABLO with CO<sub>2</sub> source disconnected, empty of paintballs, in a clean, cool & dry place & OUT OF THE REACH OF CHILDREN!
  - 5) Your DIABLO should be broken down (see FIELD STRIPPING) & checked periodically for any changes in functioning characteristics. If your DIABLO is ever dropped or exposed to severe impact, it should be carefully inspected to ensure its proper functioning has not been affected. Any repairs should be performed only by qualified factory personnel (See WARRANTY). PACKAGE YOUR DIABLO CAREFULLY (WITHOUT CO<sub>2</sub> SOURCE ATTACHED) INSURE IT FOR ITS FULL VALUE AND SEND IT AS DESCRIBED IN THE WARRANTY. AN ESTIMATE OF REPAIR COSTS WILL BE PROVIDED UPON REQUEST.
- REMEMBER: SAFETY IS YOUR RESPONSIBILITY**

.68 CALIBER PAINTBALL MARKING DEVICE

**WARRANTY  
REGISTRATION**  
YOU MUST MAIL THIS CARD WITHIN  
TEN (10) DAYS OF PURCHASE  
TO VALIDATE WARRANTY

### VERY IMPORTANT!

SERIAL NUMBER: \_\_\_\_\_  
DATE PURCHASED: \_\_\_\_\_  
PURCHASE PRICE: \_\_\_\_\_  
PURCHASED FROM (STORE NAME): \_\_\_\_\_  
CITY: \_\_\_\_\_ STATE: \_\_\_\_\_ ZIP: \_\_\_\_\_  
PURCHASED BY (YOUR NAME): \_\_\_\_\_  
STREET ADDRESS: \_\_\_\_\_  
CITY: \_\_\_\_\_ STATE: \_\_\_\_\_ ZIP: \_\_\_\_\_  
**OPTIONAL**  
YOUR GENDER: MALE  FEMALE   
YOUR AGE: \_\_\_\_\_  
NUMBER OF TIMES YOU PLAY A YEAR: 1  4  8  12  20+   
NAME OF FIELD MOST OFTEN PLAYED: \_\_\_\_\_  
ADDRESS: \_\_\_\_\_ PHONE: \_\_\_\_\_

## BEFORE YOU HIT THE FIELD

There are things you can do before you hit the field that will ensure that you have a fun, safe day playing the game. Here are some suggestions.

- 1) Before leaving for the field, check your DIABLO to make sure that it is functioning properly.
  - 2) Check your CO<sub>2</sub> source to make sure it is sound.
  - 3) Dress appropriately. Wear clothing that covers you well so there are no exposed areas of skin (Paintballs sting even when skin is covered)
  - 4) Make sure you have proper head gear that covers your eyes, ears and neck. A hat isn't a bad idea.
  - 5) Bring a squeezeie for broken balls and some paper towels or tissues for broken balls and for fogged goggles (Never remove goggles on the playing field).
  - 6) A sturdy pair of shoes (preferably boots) are a good idea for ankle support (some courses have some pretty rough terrain).
  - 7) Gloves are also a good idea to protect against scratches and abrasions that might occur on the field.
  - 8) Band-aids are a good idea in case you forget gloves and get scratches or abrasions on the field.
  - 9) A fanny pack with a secure zipper compartment is a good idea for your money, wallet, car keys and other personal items. Paintball is an active sport, and you risk having these items fall from your pockets during a game.
  - 10) Don't forget to pack a lunch and plenty of liquid refreshment. You are sure to get hungry, and thirsty (especially on hot days). Some fields provide food & refreshment (Call ahead).
- MOST IMPORTANT: FOLLOW THE RULES & PLAY SAFELY.**

PLACE  
STAMP  
HERE

**NPS, INC.**  
675 BRIDGETON PIKE  
CENTER CITY, NEW JERSEY 08051

## IMPLIED WARRANTY

NPS warrants to the original consumer purchaser that this product is free from defects in materials &/or workmanship under normal use & service for a period of ninety (90) days from date of purchase. NPS agrees to repair or replace any unit at our discretion which NPS determines to be defective. This warranty is conditional upon receipt by NPS of a signed copy of the attached warranty application & does not cover damage or defects resulting in any way from misuse or abuse, lack of reasonable care, loss of parts, or the modification of the Diablo. Any other modification of this Diablo by anyone other than an authorized NPS service agent will void this warranty. The warranty shall be valid only for the original retail purchase indicated on the attached warranty application (inside back cover) & shall be void if this Diablo is purchased from anyone other than an authorized NPS dealer or distributor if this Diablo is resold.

If this product is defective, remove the CO<sub>2</sub> supply, package it carefully and send together (postage prepaid to NPS) with your name, address, & a brief description of the problem to:

**NPS, INC.**

675 Bridgeton Pike, Center City, New Jersey, 08051

NPS's sole responsibility shall be to repair or replace the product within the terms stated above. THIS WARRANTY IS IN LIEU OF ALL OTHER WARRANTIES EXPRESSED OR IMPLIED INCLUDING ANY IMPLIED WARRANTIES OR MERCHANTABILITY OR FITNESS FOR A PARTICULAR PURPOSE. UNDER NO CIRCUMSTANCES SHALL NPS BE LIABLE FOR INCIDENTAL, OR CONSEQUENTIAL DAMAGES.

**FOR YOUR RECORDS:**

SERIAL NUMBER: \_\_\_\_\_  
PLACE OF PURCHASE: \_\_\_\_\_  
DATE OF PURCHASE: \_\_\_\_\_

The  
*Diablo*

## .68 CALIBER PAINTBALL MARKING DEVICE OWNER'S MANUAL



- \* ALWAYS WEAR FACE & EYE PROTECTION
- \* READ & UNDERSTAND THIS MANUAL BEFORE USING
- \* TRANSFER THIS MANUAL UPON CHANGE OF OWNERSHIP
- \* YOU MUST BE 18 YEARS OLD TO PURCHASE THIS PRODUCT

**CAUTION:** THIS IS NOT A TOY. ADULT SUPERVISION REQUIRED. MISUSE OR CARELESS USE OF THIS DIABLO .68 CALIBER PAINTBALL MARKING DEVICE COULD RESULT IN SERIOUS PERSONAL INJURY OR DEATH.

## SAFETY PRECAUTIONS

*Continued from previous page.*

- Use only .68 caliber paintballs. Never attempt to load or fire foreign objects from your Diablo.
- If you ever loan or sell your Diablo, be sure to include this owner's manual and stress that person to study the manual carefully before using the Diablo.
- The Diablo has been adjusted in the factory to shoot paintballs within specific velocities. Do not alter or modify this Diablo except within specified parameters set forth elsewhere in this manual.
- Only use paintballs that are specially formulated from non-toxic, water-soluble materials. Should accidental eye contact be made (animal or human) with "paint", flush with water or saline solution and consult a doctor immediately.
- Never store or transport your Diablo with a charged CO<sub>2</sub> source installed or with the Diablo in a cocked position.
- Do not handle or use this Diablo unless you are thoroughly familiar with its mechanical & handling characteristics.
- Pressurize your Diablo only when in use. Do not load until you are ready to use, and always unload after use.
- Never discharge your Diablo if it or the CO<sub>2</sub> source has been heated above the surrounding air temperature. This may increase muzzle velocity.
- Never cock your Diablo until your target has been selected and you are ready to fire.

**SAFETY MUST ALWAYS BE YOUR FIRST PRIORITY!**

## SAFETY

To engage the safety feature of your Diabolo, locate the "button" on the left side of the main body directly above the grip. Push button in so it is flush with main body. The safety is now engaged. (See figure 2)

To disengage safety, push button from the right side so it is flush with main body. Your Diabolo is now ready to fire.

Always keep safety in "SAFE" position until ready to shoot!

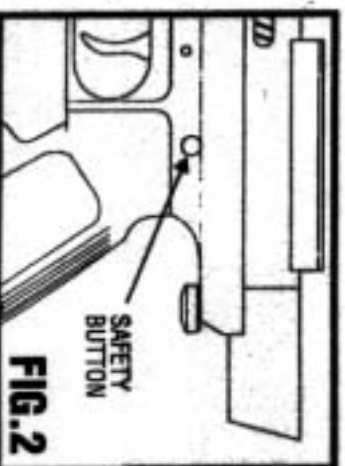


FIG. 2

## B LOADING

**POINT GUN IN A SAFE DIRECTION.** Attach 1" elbow (not included) onto drop tube of empty loader. Secure to gun by sliding other end of elbow over feed port (See Figure 3). Top of loader should be parallel to top of barrel. To achieve, adjust loader by rotating it until properly level & secure. You are now ready to fill loader with paintballs.

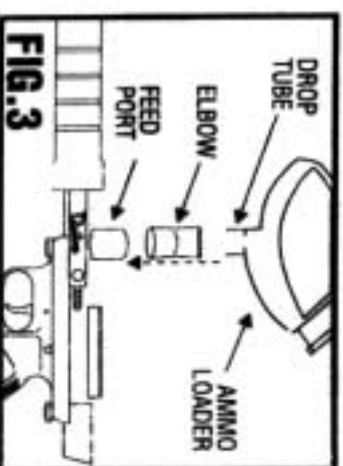


FIG. 3

### SYMPTOM

WILL NOT FIRE

### REMEDY

1) Make sure safety is disengaged. 2) Pump must be pulled all of the way back to engage seat. 3) Check for ball (rod) hanging up in the loader. 4) Dirt in trigger housing (Clean & lubricate).

FIRES WITH ERRATIC SPEED

1) Reverse Cup Seal Washer 180 degrees. 2) Replace Cup Seal Washer 3) Make sure Breech Component is clean & lubricated. 4) Lubricate Valve Seat & Power tube. 5) Check barrel for oil or paint. (Use squeegee to clean.) 6) Replace bolt O-ring 8) Pin Valve not open all the way. Check depressing Pin.

PUMP ACTION NOT SMOOTH

1) Check for dirt in breech. 2) Make sure breech components are lubricated. Lubricate Bolt O-ring with Gold Cup Lubricant (not silicone grease). 3) Check Pump Arms to make sure Cocking Bolt O-ring is in place and arms are not touching breech housing.

## CO2 SAFETY

**VERY IMPORTANT!**

When removing the bottle from your DIABOLO, MAKE SURE TO NOTE IF THE VALVE IS ROTATING WITH THE TANK. See Fig. 5 and mark your tank as the drawing shows you. If the tank is rotating, and the valve is not turning an equal amount, STOP. Do not try to go any further. Take to a qualified gunsmith and say that valve is not rotating with the tank. IF THE TANK COULDS OFF THE VALVE, what you have is an unmanageable rocket! Immediately loosen the safety nut on the valve & drain the remaining CO2!

**IMMEDIATELY TAKE TANK TO A QUALIFIED GUNSMITH!**



FIG. 5

Safety Nut (Burst Nut)

Scratch line on valve & tank to make sure both are rotating equally.

For other problems, questions, or assistance, please call us at the following number, anytime between 8am & 8pm Eastern Standard Time

**609-464-1068**

# Diabolo

## FIELD STRIPPING

FOR NORMAL CLEANING & MAINTENANCE

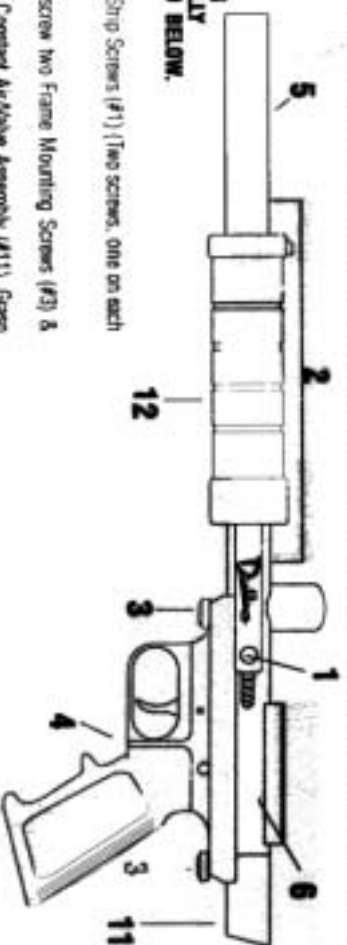
**- BE SURE TO REMOVE CO2 SOURCE BEFORE FIELD STRIPPING - IT'S A GOOD IDEA TO MAINTAIN YOUR DIABOLO BY PERIODICALLY STRIPPING IT AND CLEANING IT FOLLOWING THE STEPS LISTED BELOW.**

### DISASSEMBLY:

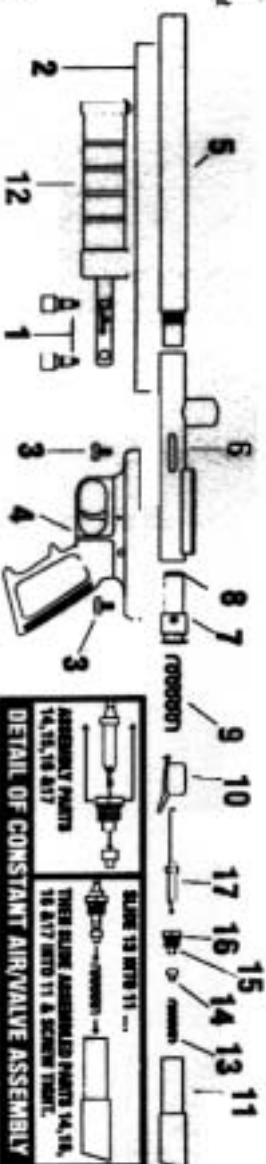
- 1) To remove Pump Assembly/Foregrip (#12); remove both Pump Field Strip Screws (#1) (Two screws, one on each side). Slide Pump Assembly/Foregrip off.
- 2) To remove barrel (#5), hold gun by grip and twist barrel clockwise.
- 3) To remove Trigger Frame Assembly (#4) from Main Body (#6); unscrew two Frame Mounting Screws (#3) & remove Trigger Frame Assembly from Main Body.
- 4) Constant Air/Valve Assembly (#11) will "pop out" slightly. Remove Constant Air/Valve Assembly (#11). Grasp barrel with left hand, point upward & tap base of barrel sharply against palm of right hand. Hammer Assembly (#10), Main Spring (#9) & Bolt (#7) will fall out in that order. Be careful to catch them as they fall from Main Body (#6).
- 5) Constant Air/Valve Assembly (#11) can be broken down by simply reversing assembly procedure (See Detail at lower right).

### CLEANING:

- 1) Once you have broken your Diabolo down, wash affected parts (usually barrel & bolt) with mild soap & water.
- 2) Dry thoroughly. (Paper towels work very well)
- 3) Use a SMALL amount of PAINTBALL OIL to lubricate Bolt O-Ring (#6)
- 4) Lightly treat internal parts with a light spray lubricant.
- 5) Re-assemble your Diabolo.



- 1) Pump Field Strip Screws (2)
- 2) Barrel Assembly
- 3) Frame Mounting Screws (2)
- 4) Trigger Frame Assembly
- 5) Barrel
- 6) Main Body
- 7) Bolt
- 8) Bolt O-Ring
- 9) Main Spring
- 10) Hammer Assembly
- 11) Constant Air Adapter/Valve Assembly
- 12) Pump Assembly/Foregrip
- 13) Valve Strip
- 14) Cup Seal
- 15) Valve Seat
- 16) Valve Seat O-Ring
- 17) Power Tube



SLIDE 13 INTO 11 ...

ASSEMBLY PARTS

THREE SLIDE ASSEMBLED PARTS 14, 15, 16, 17 INTO 11

**DETAIL OF CONSTANT AIR/VALVE ASSEMBLY**

**IF YOU RUN INTO DIFFICULTIES & REQUIRE ASSISTANCE, CALL 609-464-1068**

**FOR BEST RESULTS USE:**

The Paintball

# PROBALL

The Pros Use!



**PAINTBALL SAFETY GOGGLES CONSTANT AIR TANKS**

**For Local Fields, Call: 609.464.1068**

## TROUBLE SHOOTING

Some problems can easily be corrected by yourself. Refer to FIELD STRIPPING on previous page for assistance.

SYMPTOM	REMEDY
<b>CO2 LEAKS</b>	1) Replace Cup Seal Washer inside gun. 2) Clean Power Tube (#17) & Valve Seat (#15) (Dirt or lack of lubrication can hang up Power Tube in open position)
<b>SAFETY CO2</b>	1) When removing Tank (CO2 source) from gun, make sure brass valve housing & tank are turning at the same time. If they are not, STOP & take it to a qualified gunsmith. YOU HAVE A DANGEROUS SITUATION. IF A GUNSMITH OR QUALIFIED PERSON IS NOT AVAILABLE, LOOSEN THE BURST NUT (LOCATED ON THE SIDE OF THE VALVE) AND LET CO2 DRAIN OUT. TAKE VALVE & TANK TO A GUNSMITH TO RE-TORQUE NUT & REPLACE BURST DISK & WASHER. (SEE FIG. 5)
<b>POOR ACCURACY</b>	1) Bad paint. 2) Old paint. 3) Dirty Barrel (Clean with squeegee)
<b>BALL BREAKAGE</b>	1) Excessive CO2, lower speed. 2) Double loading (See section on FIRING). 3) Barrel may have been dropped, getting a dent or burr on the leading edge. 4) Patching ball between bore & feed port. 5) Old balls swollen or feeder hanging ball up & pre-venting ball from seating on the bore. 6) Moving pump forward before ball falls into place.
<b>WILL NOT COCK</b>	1) No CO2 in the chamber. 2) Check to see if the pin valve is being depressed (open) by the CA valve Pin. 3) No CO2 in bottle. 4) Front & rear Frame Mounting Screws (#3) are loose. 4) Cocking bolts are loose. 5) Hammer installed backwards.

TROUBLE SHOOTING continued on next page

## OPERATING INSTRUCTIONS

### CO2 CHARGING

Before charging make sure your Diablo is not loaded with paintballs. Grasp gun, pointing it in a safe direction, and line up threads of CO<sub>2</sub> cylinder with constant air adapter located at rear of gun. (See figure 1) Gently rotate CO<sub>2</sub> cylinder clockwise screwing threaded end into cavity until secure. **DO NOT OVERTIGHTEN.**

### TO REMOVE CO<sub>2</sub> CYLINDER -

Visually inspect chamber to be sure that weapon is not loaded!  
Be sure muzzle is pointed in a safe direction and pull trigger to make sure gun is not cocked.  
Hold gun in left hand at top of main body. Quickly unscrew the CO<sub>2</sub> cylinder (rotating counter-clockwise). Pin Valve

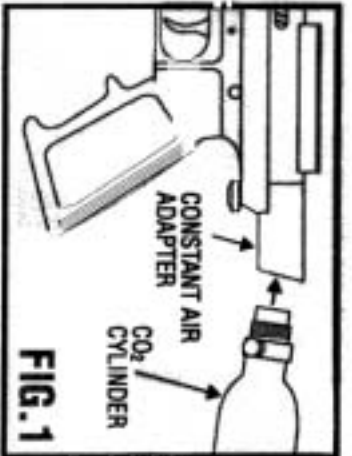


FIG. 1

will automatically close itself after the first couple of threads. Remove cylinder completely.

**CAUTION: CO<sub>2</sub> CAN CAUSE FROSTBITE. DO NOT HOLD GRIP WHILE ENGAGING OR DISENGAGING CO<sub>2</sub> CYLINDER!**

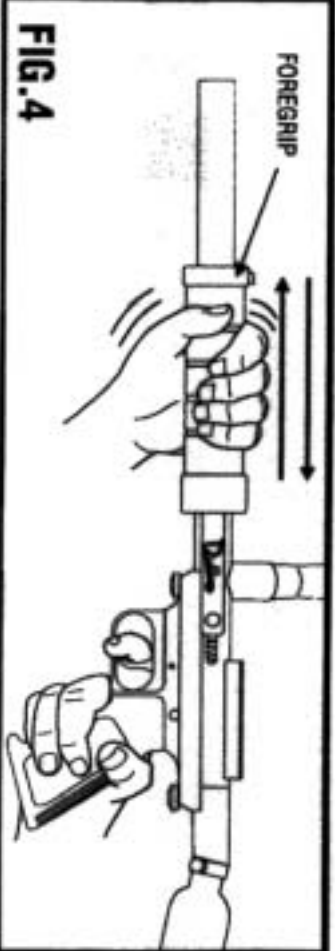


FIG. 4

### FIRING

Make sure safety is disengaged. Hold Diablo as shown above and quickly pull foregrip back (toward you) and forward (away from you) one time (Fig. 4). This action loads one paintball into the "firing" chamber. This should be done in one fluent motion. Point your Diablo at a target and pull the trigger. To fire again, repeat this procedure. The Diablo will fire as fast as it is pumped and the trigger pulled in normal operation.

**PUMPING MORE THAN ONCE BEFORE FIRING WILL RESULT IN GUN JAMS OR BALL BREAKAGE. IF BALL BREAKAGE OCCURS, CLEAN THE BARREL AND FEED PORT BEFORE USING YOU DIABLO AGAIN. NEVER POINT YOUR DIABLO, CHARGED OR UNCHARGED, LOADED OR UNLOADED, SAFETY ON OR OFF AT ANYTHING YOUR DO NOT INTEND TO SHOOT.**

## PLAY SAFE!